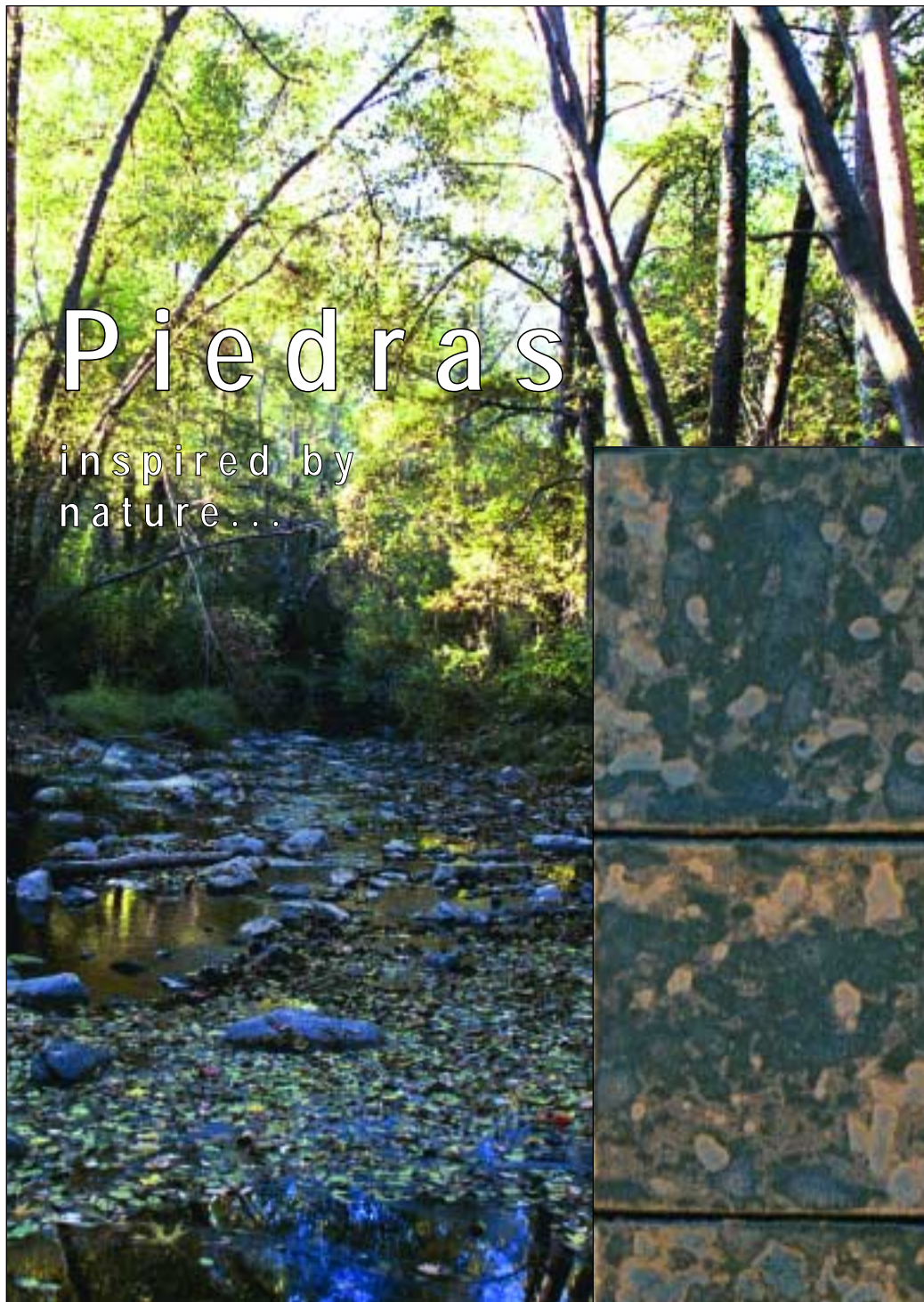


McIntyre

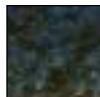
TILE COMPANY, INC

# Piedras

inspired by nature...



42



72



117



161



101



153

MCINTYRE TILE COMPANY, INC.  
(707) 433-8866

P.O. BOX 14

HEALDSBURG, CA 95424  
WWW.MCINTYRE-TILE.COM

## Piedras Tiles

Piedras is McIntyre Tile's most naturalistic series. It has a wide range of color, texture and tonality. Glazes are applied as textures in layers. The most unusual and varied effects can be expected. When installed, these tiles are quite spectacular. Piedras in Spanish means rock.

Glazes featured in this series are matte, satin and shiny. Piedras features neutral and metallic colors with maximal tonal variation. The surface is very hard and suitable for use on counters, floors, fireplaces and hearths. Caution should be used with colored grouts. Please read the installation guide for Piedras tiles.

Showroom displays show a typical range of variation that will be a part of a production run. Proportions of each variation in an actual job will vary. We recommend you calculate requirements carefully to avoid re-orders which may vary somewhat from the initial production.

This tile is vitreous and may be used in wet or frosty applications, inside and outside.

**Tile sizes:**  $1\frac{1}{4} \times 1\frac{1}{4}$ , 2x2, 2x4, 2x6, 3x3, 3x6, 4x4 and 6x6. Triangles are made in 2", 3", 4" and 6".

**Trim and Accessories:** SBN is available on all field tiles. Extruded shapes from the McIntyre Classic line are available. Feature strips, carved decoratives and custom colors are all available. Basins, sinks and soapdishes are NOT available in Piedras glazes. However, complementary glazes may be selected from the Classic and Arts & Crafts Lines.

## Sizes

